

# ***2018 Connecticut Community Readiness Survey Results: Region 4 North Central: NCRMHB***

Developed by the Department of Mental Health and Addiction Services  
Center for Prevention Evaluation and Statistics at UConn Health  
October 2018



**CONNECTICUT  
Clearinghouse**  
a program of the Connecticut Center  
for Prevention, Wellness and Recovery



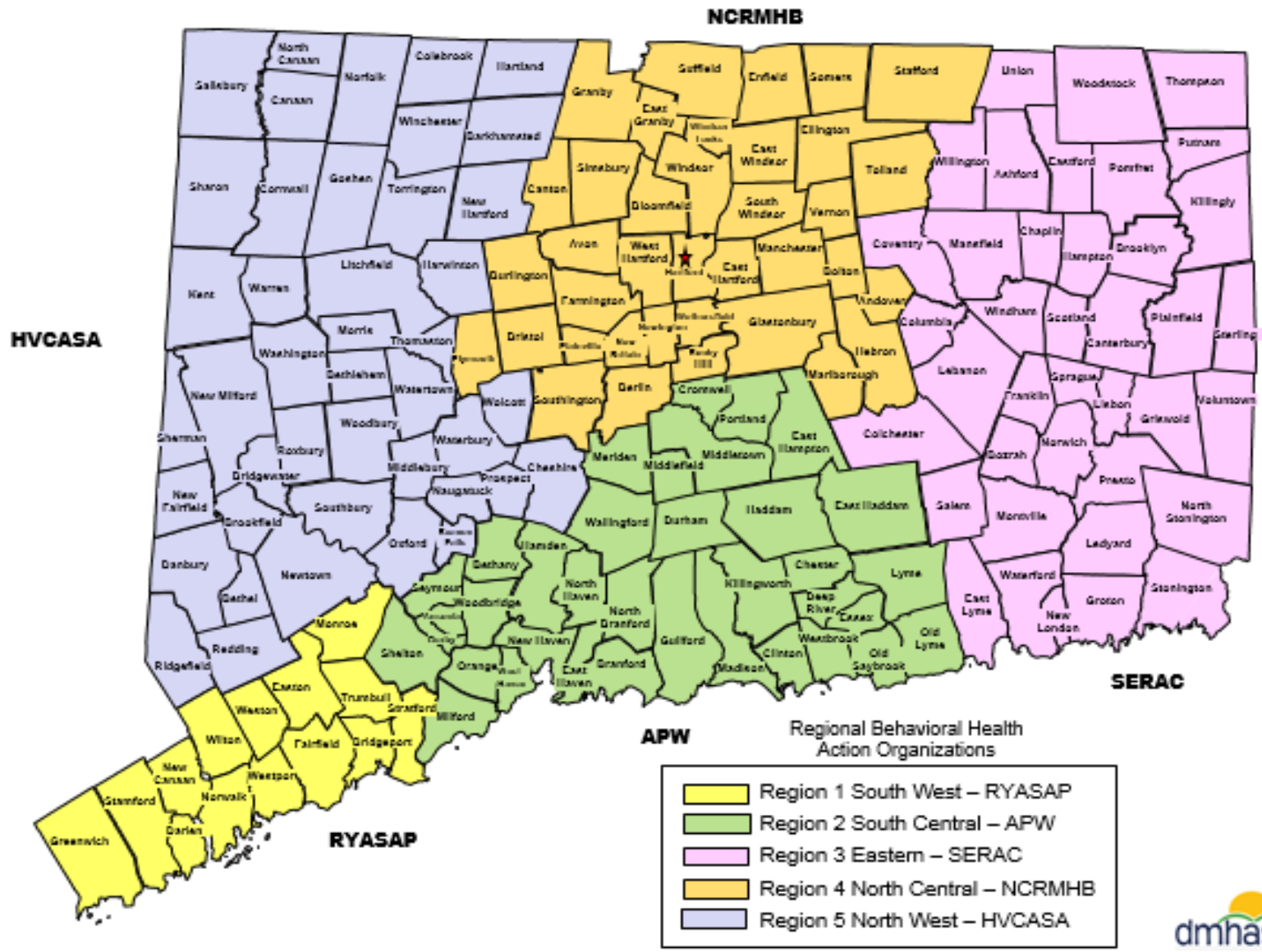
## Connecticut Community Readiness Survey (CRS) Objectives

- Assess perceived substance use problems at the local level;
- Measure community readiness for substance abuse prevention:
  - Community attitudes about alcohol and drug use, mental health promotion, and suicide and problem gambling prevention;
  - Community support for prevention;
  - Availability and perceived effectiveness of prevention strategies;
  - Perceived barriers to substance abuse prevention;
  - Use of data for substance abuse prevention;
  - Rating of community readiness;
- Develop a tool and methodology that DMHAS can use for ongoing needs assessment;
- Inform substance abuse prevention planning and mental health promotion at state and regional levels;
- Identify needs for training and technical assistance;
- Provide data to evaluate the impact of SPF-based initiatives.

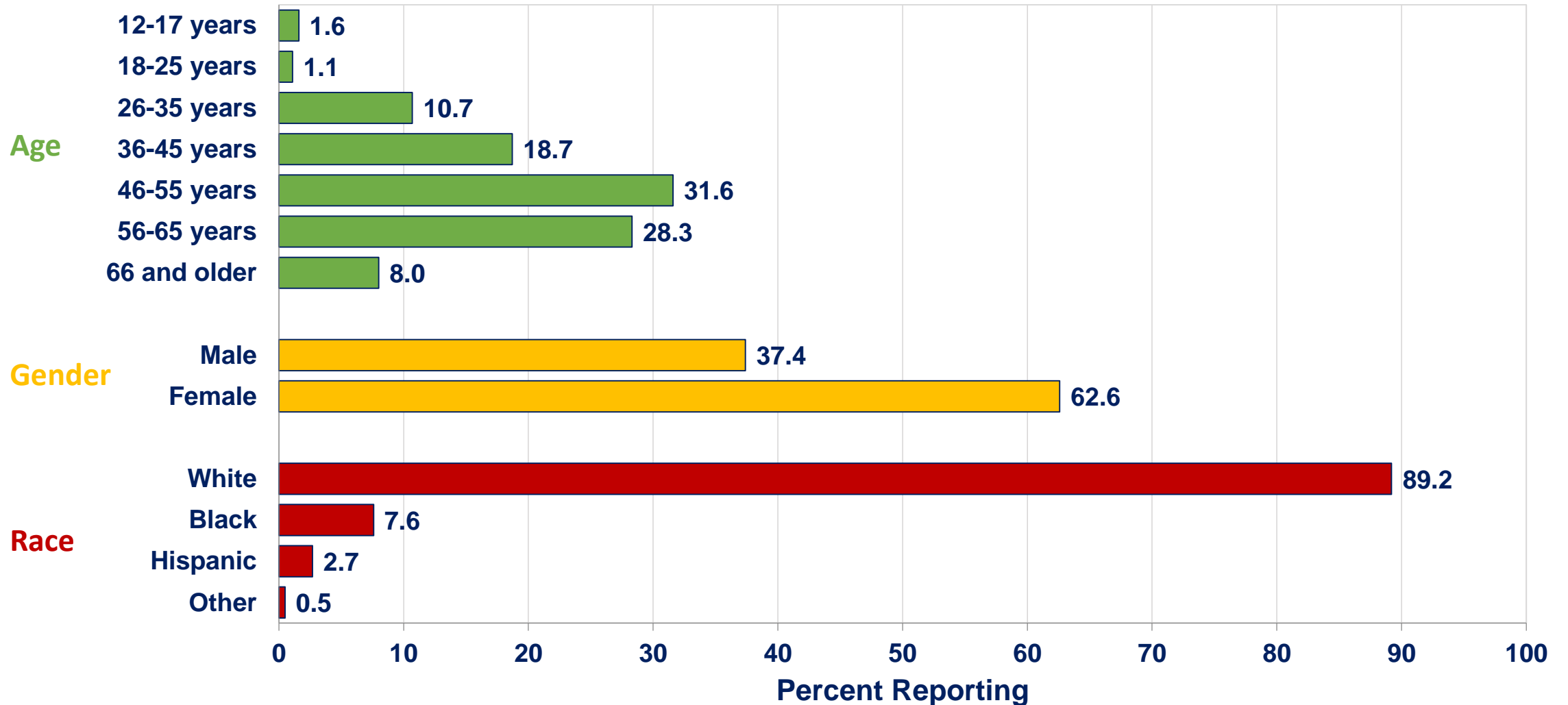
# Connecticut Community Readiness Survey (CRS) Approach

- Instrument developed through a consensus process involving DMHAS, its Resource Links, State Advisory Committee and UConn Health;
- Administered biannually statewide since 2006;
- Web-based survey implementation supplemented by paper surveys ;
- CT Clearinghouse coordinates e-mail distribution of the survey;
- Regional Behavioral Health Action Organizations (formerly Regional Action Councils) identify 5-10 key informants per town/city to survey;
- RBHAOs conduct active outreach and follow up with key informants to encourage participation and maximize responses;
- Data analysis by the DMHAS Center for Prevention Evaluation and Statistics at UConn Health;
- State and regional results are disseminated to RBHAOs to support planning;
- This approach resulted in **975** responses to the 2018 CRS survey statewide, with representation in **163** of 169 communities.

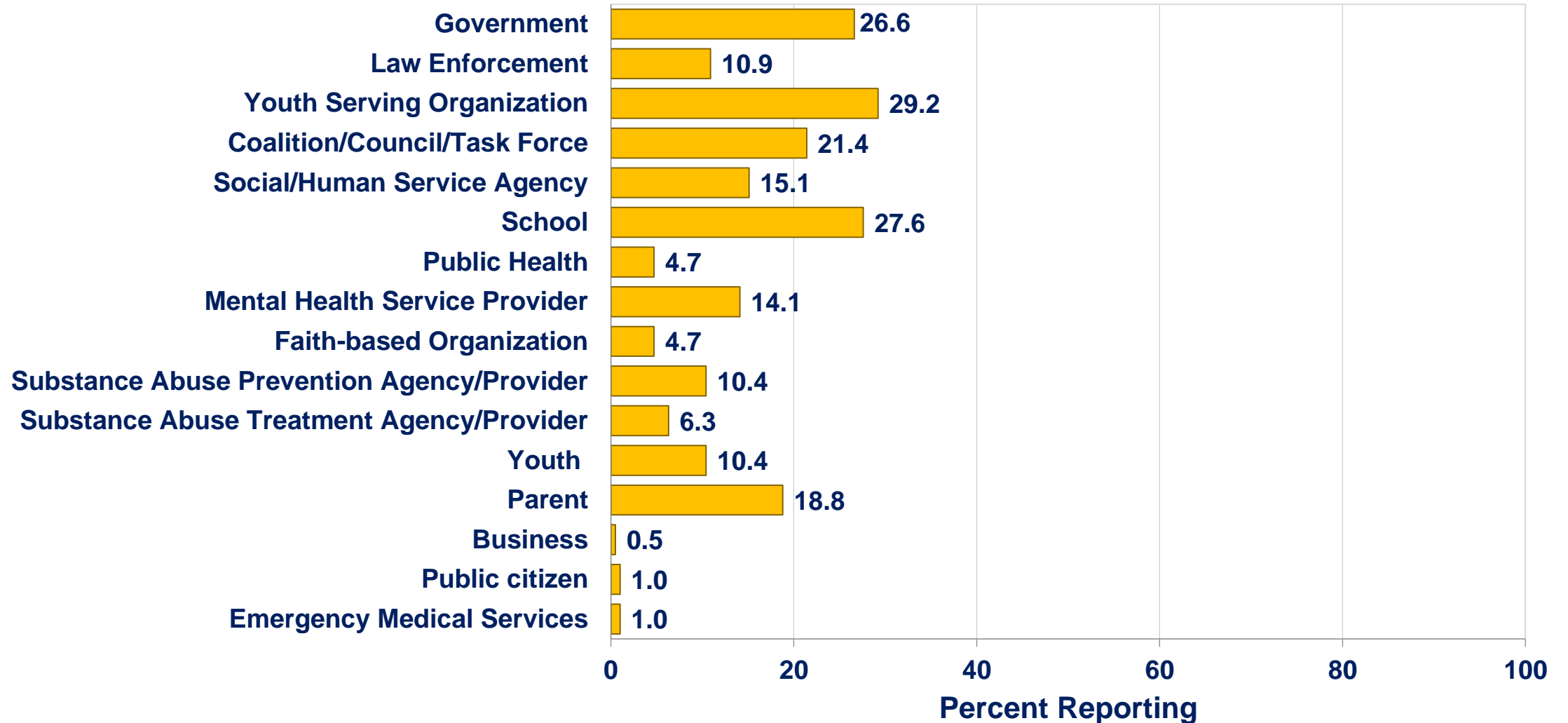
# DMHAS Regional Behavioral Health Action Organizations (RBHAOs)



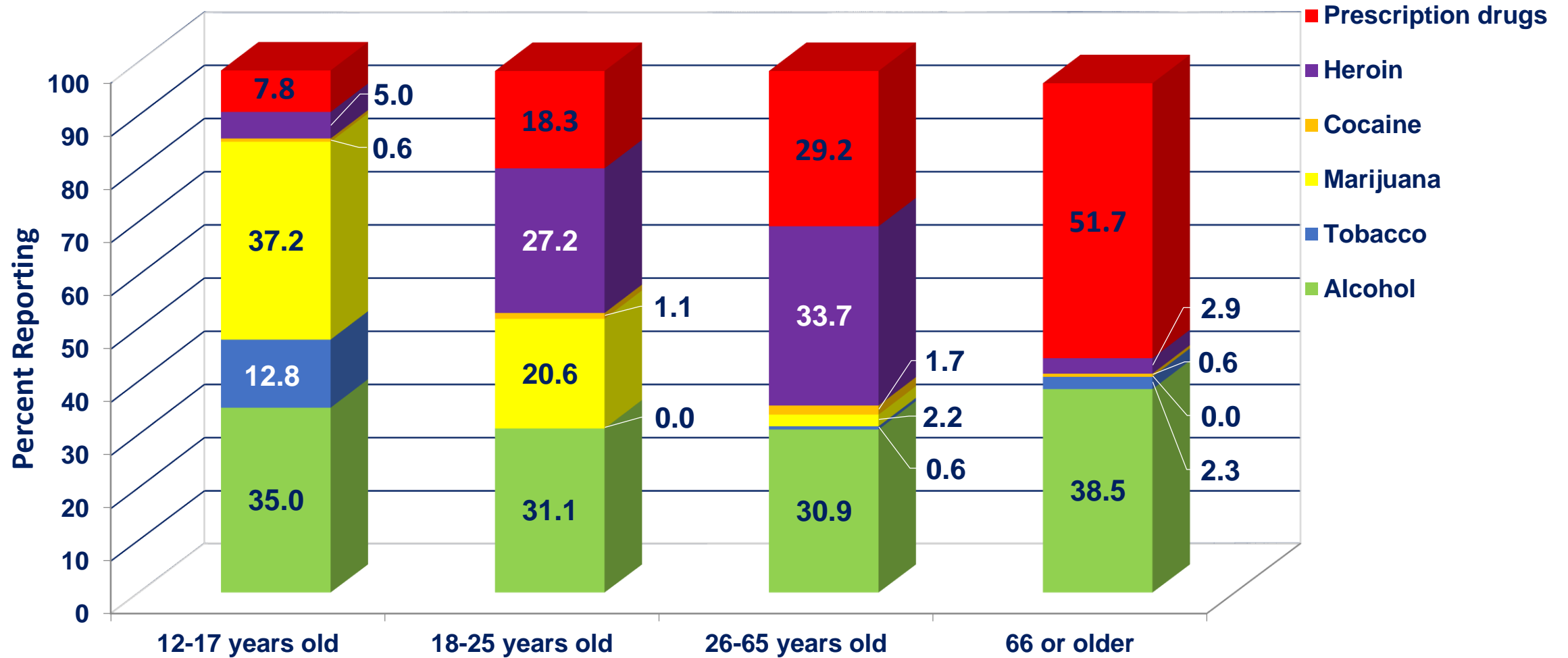
# Key Informant Demographic Characteristics: NCRMHB CRS, 2018



# Key Informant Stakeholder Affiliation: NCRMHB CRS, 2018

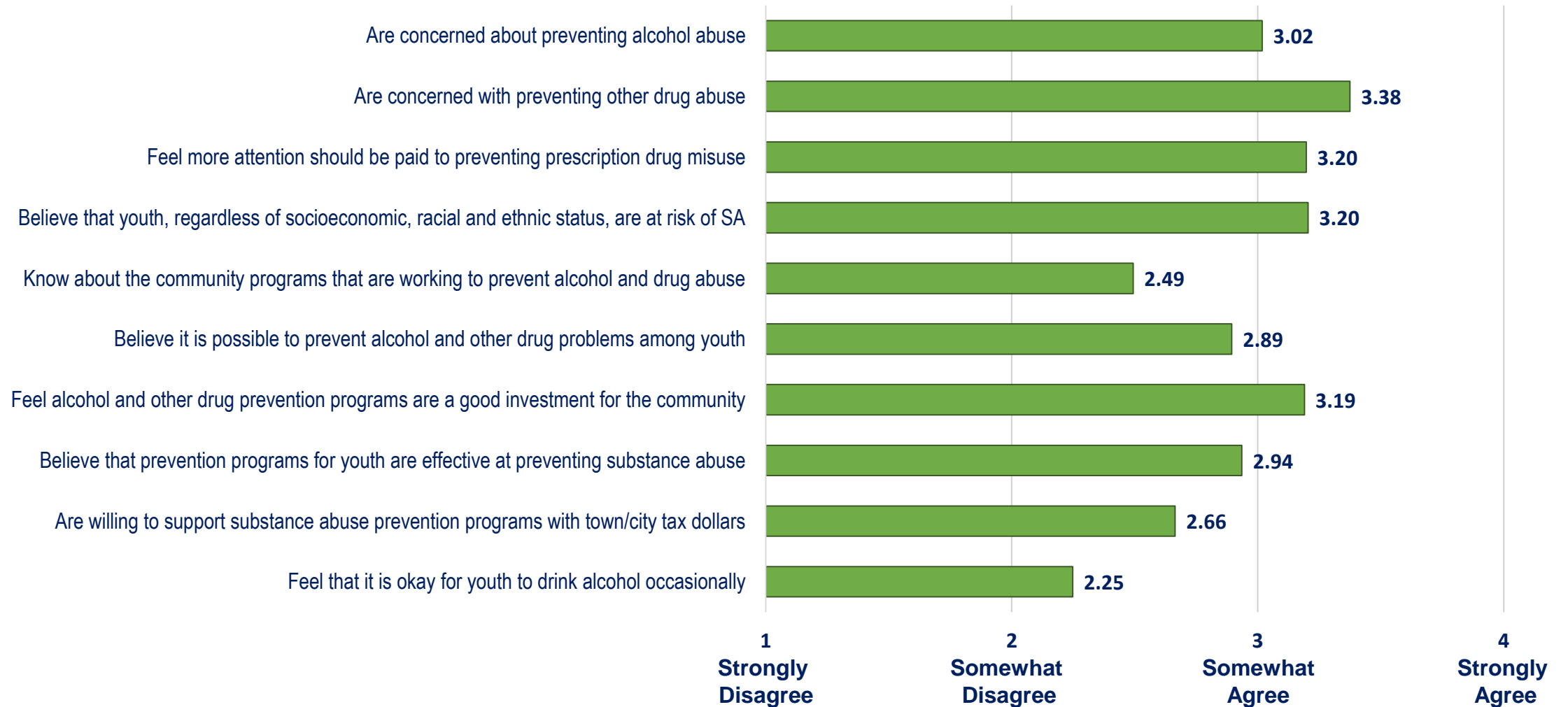


# Problem Substances of Greatest Concern According to Key Informants By Age Group: NCRMHB CRS, 2018



# Community Attitudes Toward Substance Abuse Prevention [Q10]: NCRMHB CRS, 2018

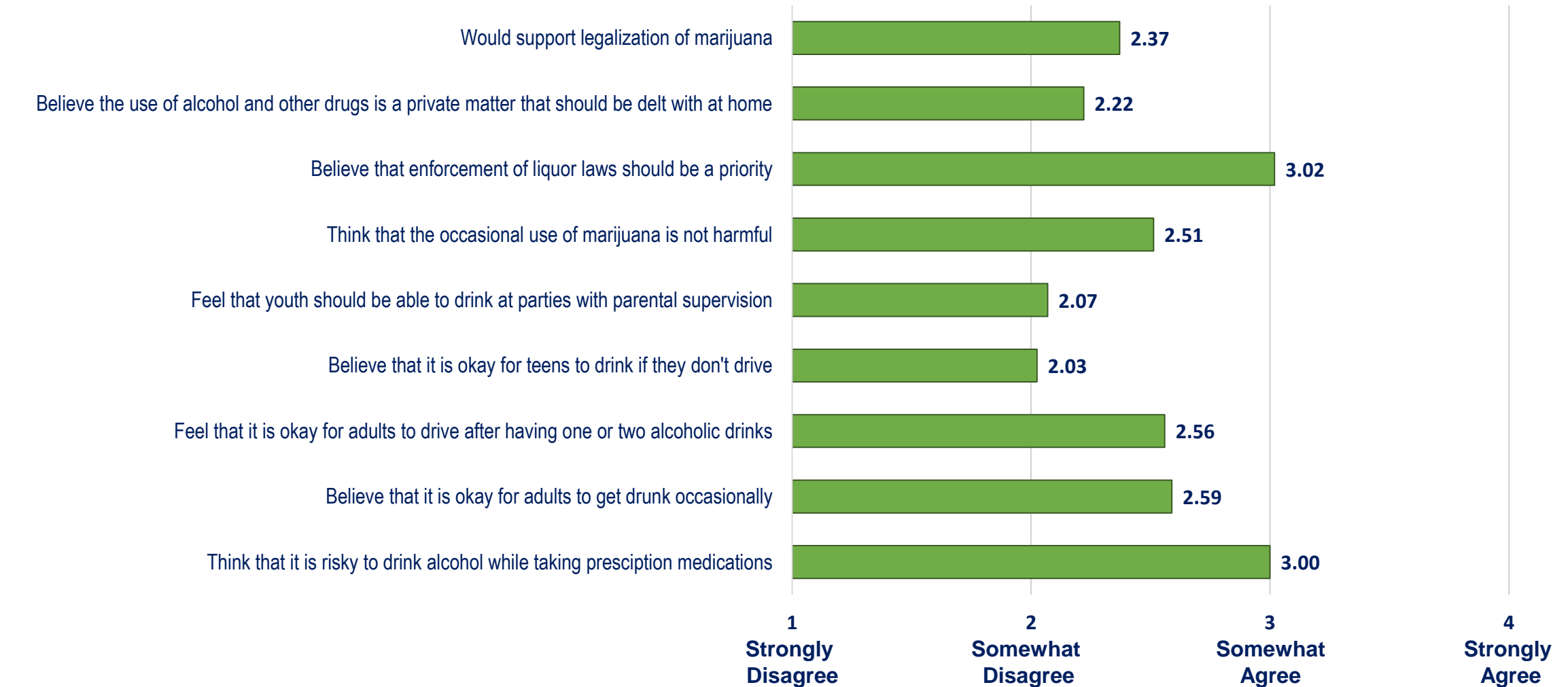
## Key Informant believes that most community residents ....



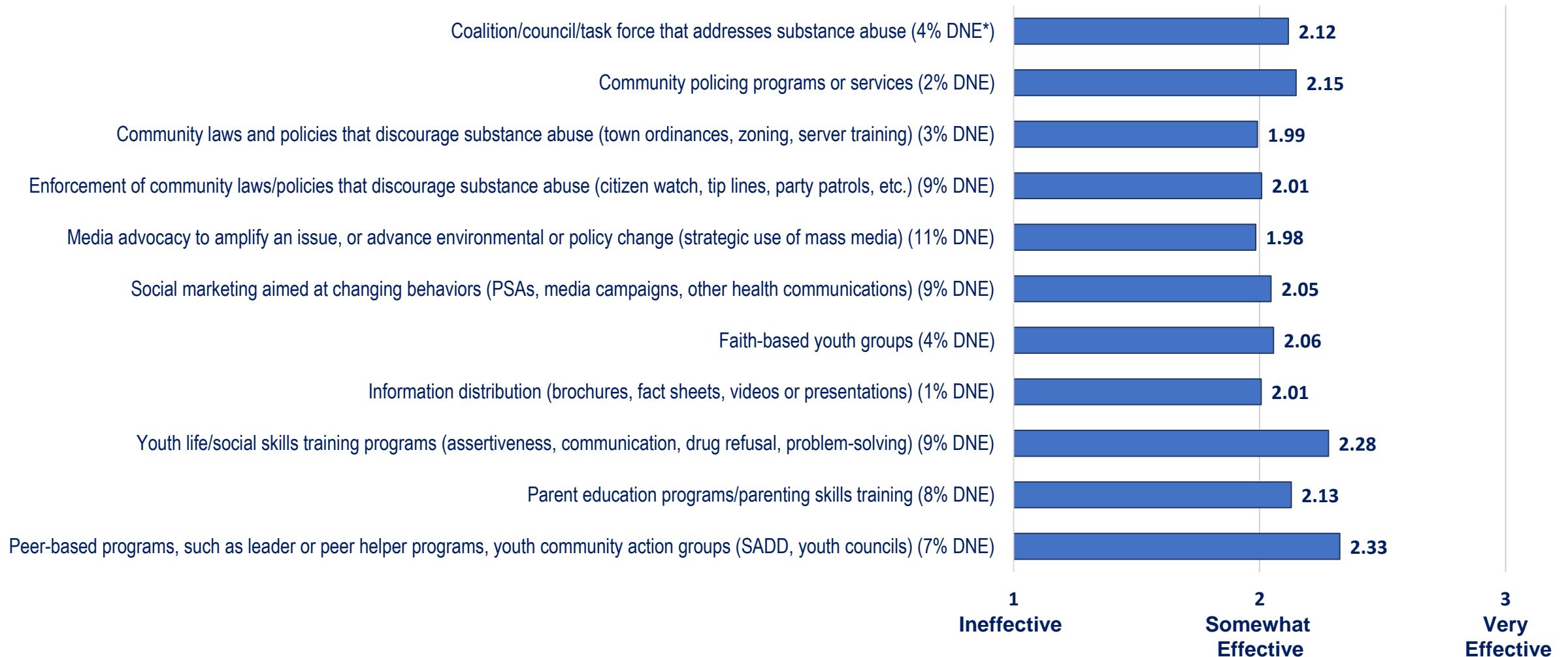


# Community Attitudes Toward Substance Abuse Prevention [Q10]: NCRMHB CRS, 2018

*Key Informant believes that most community residents ....*

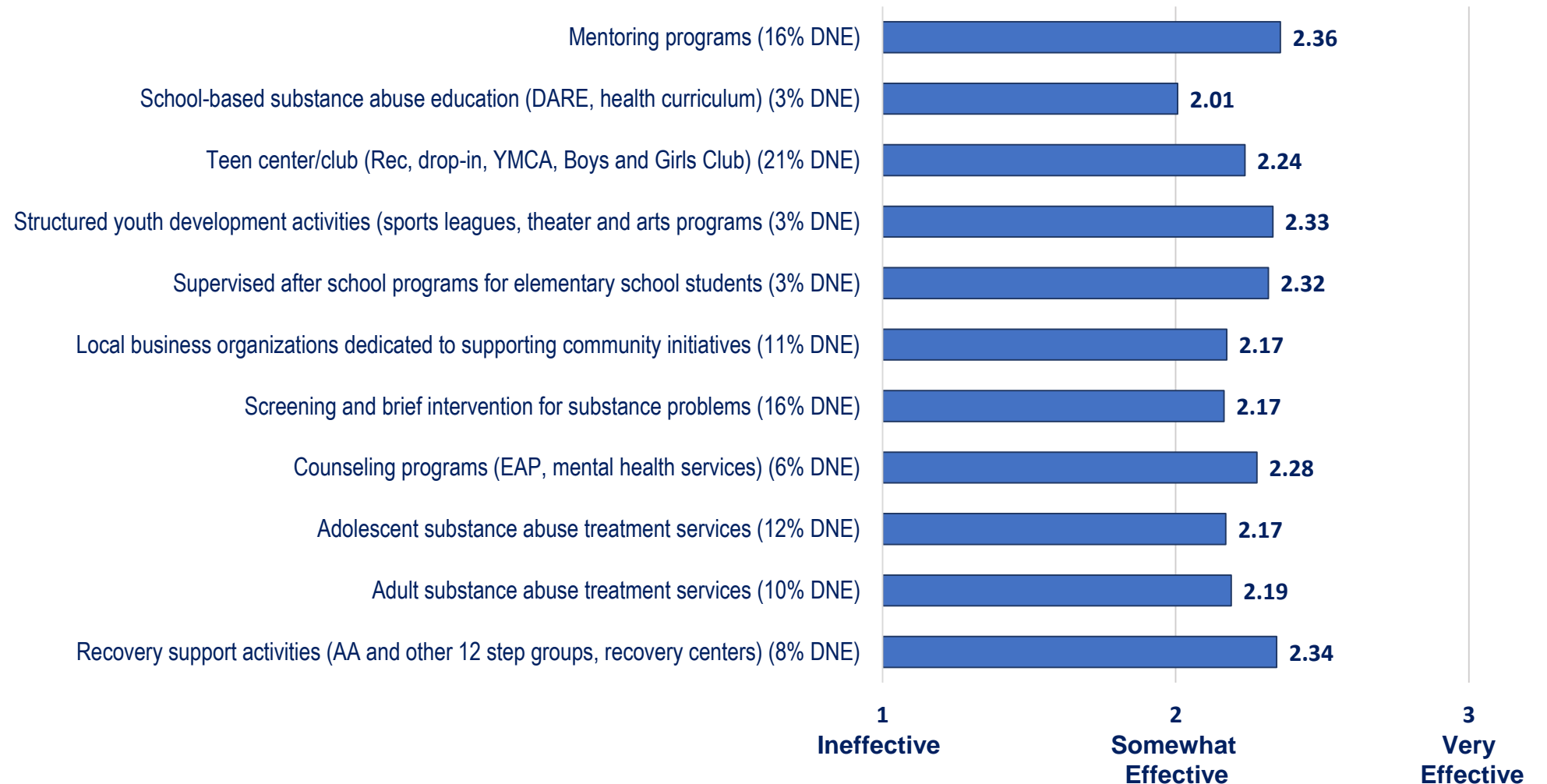


# Key Informant Ratings of Substance Abuse Prevention Strategies in the Community [Q11]: NCRMHB CRS, 2018



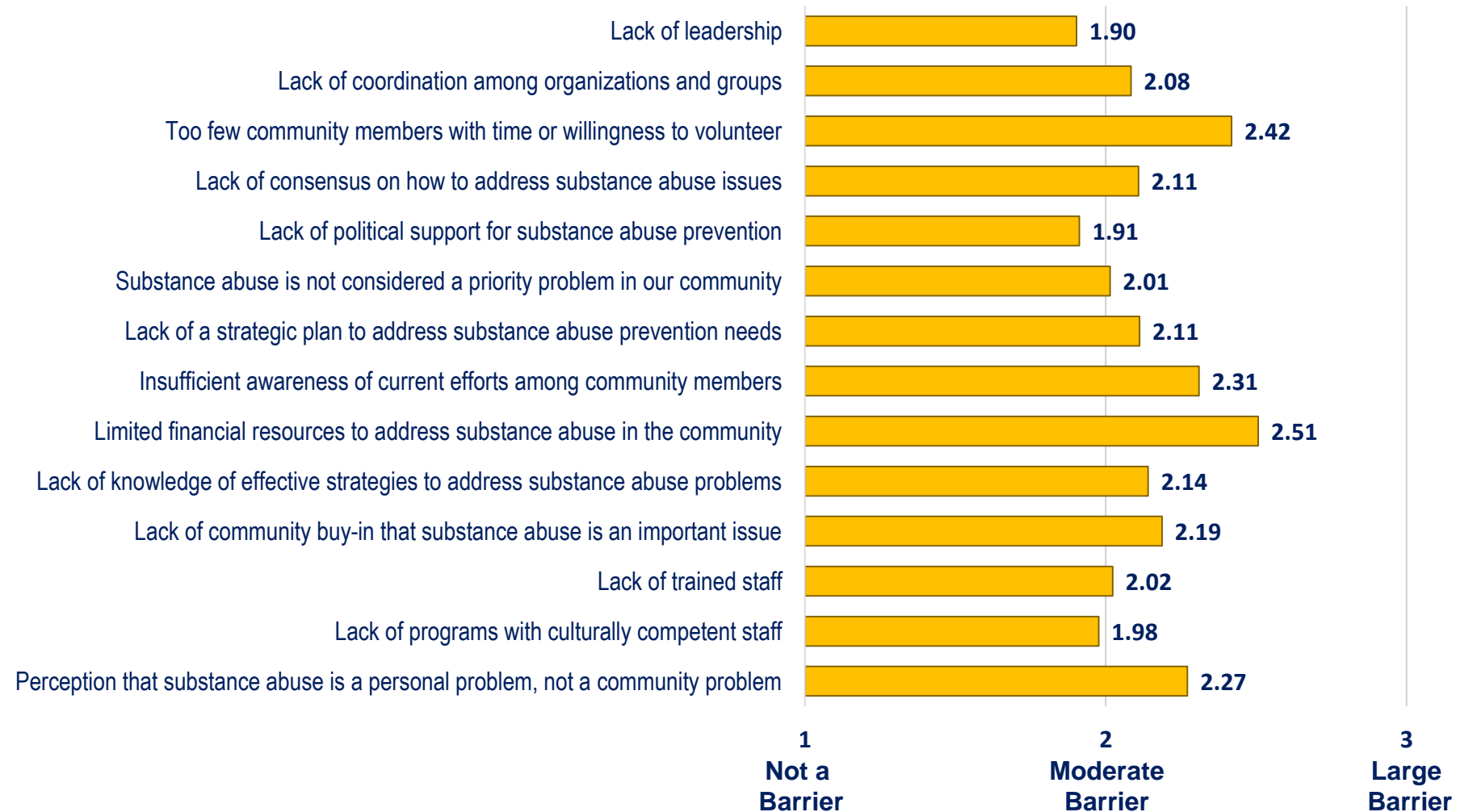
\*DNE: % indicating the strategy Does Not Exist

# Key Informant Ratings of Substance Abuse Prevention Strategies in the Community [Q11]: NCRMHB CRS, 2018

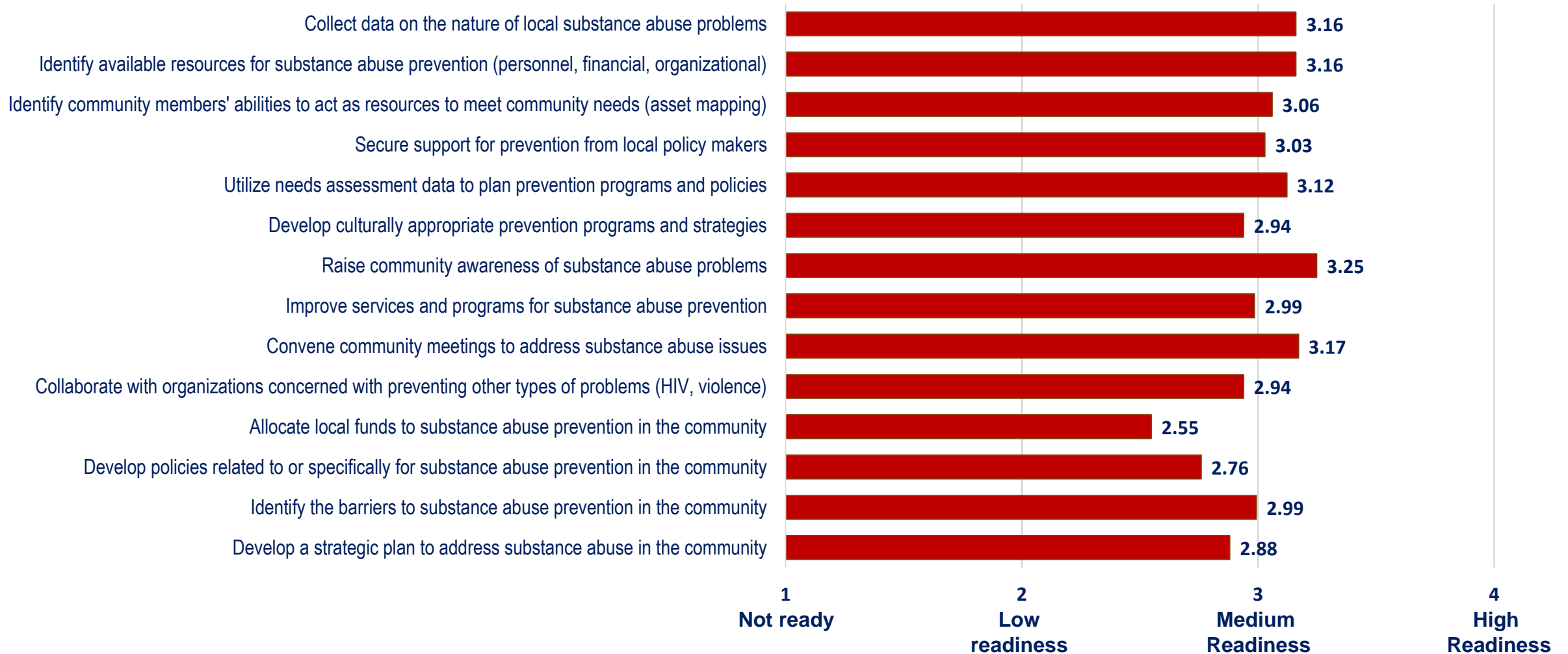


\*DNE: % indicating the strategy Does Not Exist

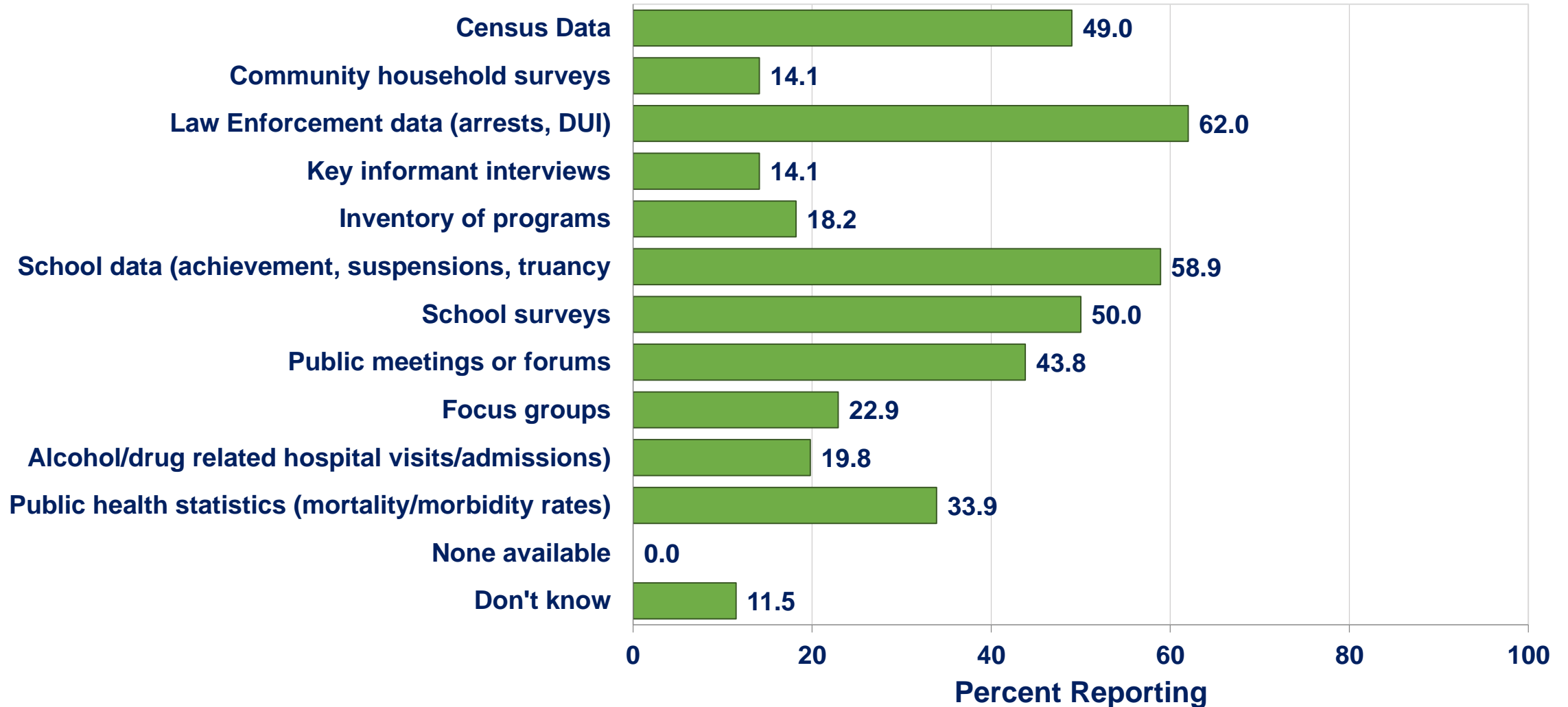
# Perceived Barriers to Substance Abuse Prevention Activities in the Community [Q12]: NCRMHB CRS, 2018



# Key Informant Ratings of Community Readiness for Substance Abuse Prevention Planning Activities [Q13]: NCRMHB CRS, 2018



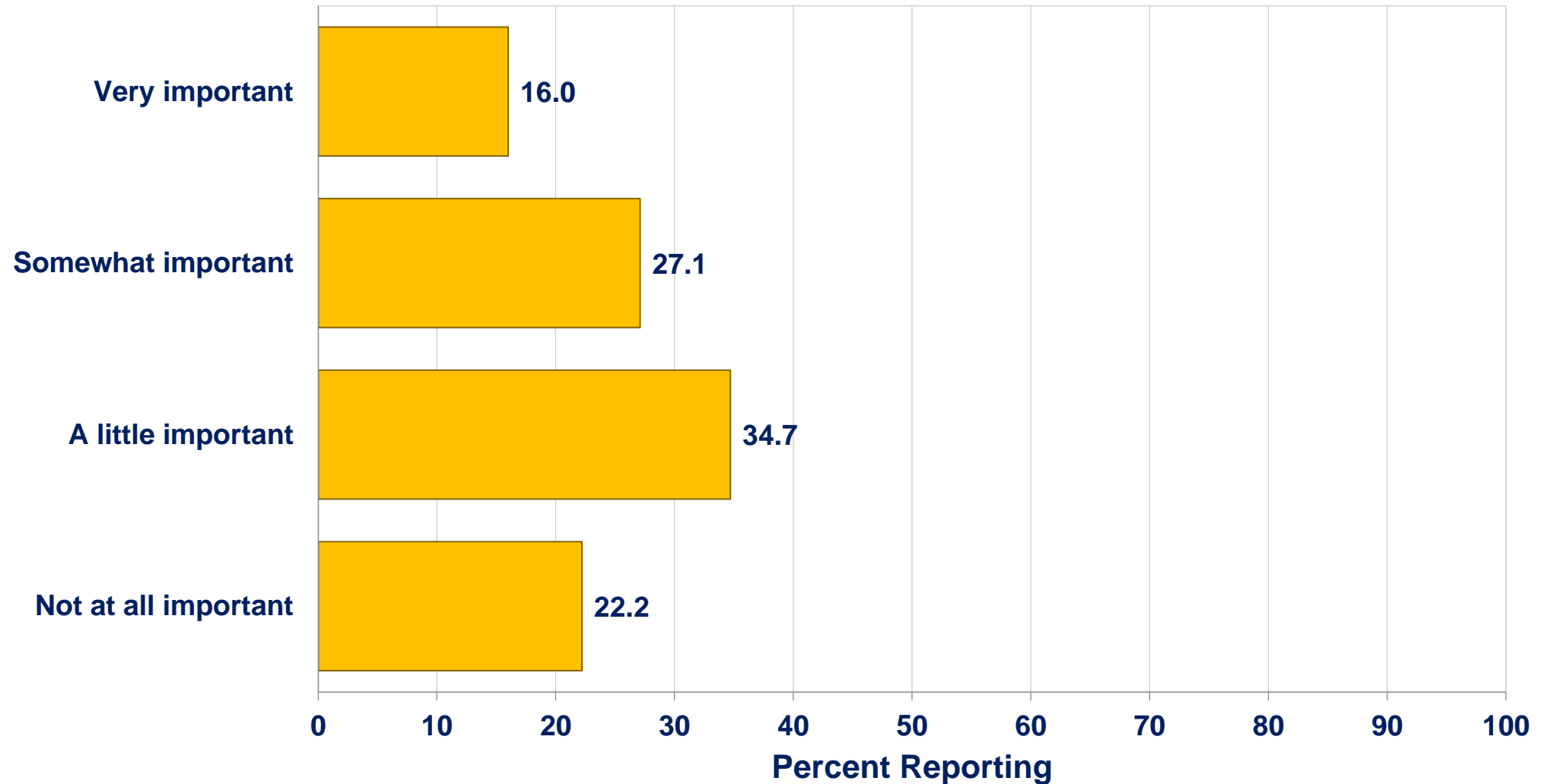
# Availability of Substance Abuse Prevention Data [Q14]: NCRMHB CRS, 2018



# Key Informant Ratings of the Community Stage of Readiness for Substance Abuse Prevention [Q15]: NCRMHB CRS, 2018

Community Stage of Readiness for Substance Abuse Prevention: NCRMHB	Percent
1 - This town/city tolerates or encourages substance abuse.	0.0
2 - This town/city has little or no recognition of the substance abuse problem.	4.2
3 - This town/city believes that there is a substance abuse problem, but awareness of the issue is only linked to one or two incidents involving substance abuse.	11.9
4 - This town/city recognizes the substance abuse problem and leaders on the issue are identifiable, but little planning has been done to address problems and risk factors.	20.3
5 - This town/city is planning for substance abuse prevention and focuses on practical details, including seeking funds for prevention efforts.	28.7
6 - This town/city has enough information to justify a substance abuse prevention program and there is great enthusiasm for the initiative as it begins.	10.5
7 - This town/city has created policies and/or more than one substance abuse prevention program is running with financial support and trained staff.	11.9
8 - This town/city views standard substance abuse programs as valuable, new programs are being developed to reach out to at-risk populations and there is ongoing sophisticated evaluation of current efforts.	9.1
9 - This town/city has detailed and sophisticated knowledge of prevalence, risk factors, and substance abuse program effectiveness and the programming is tailored by trained staff to address risk factors within the community.	3.5
<b>Mean Stage of Readiness for NCRMHB (n=143)</b>	<b>5.19</b>
Mean Stage of Readiness for Connecticut (n=744)	5.26

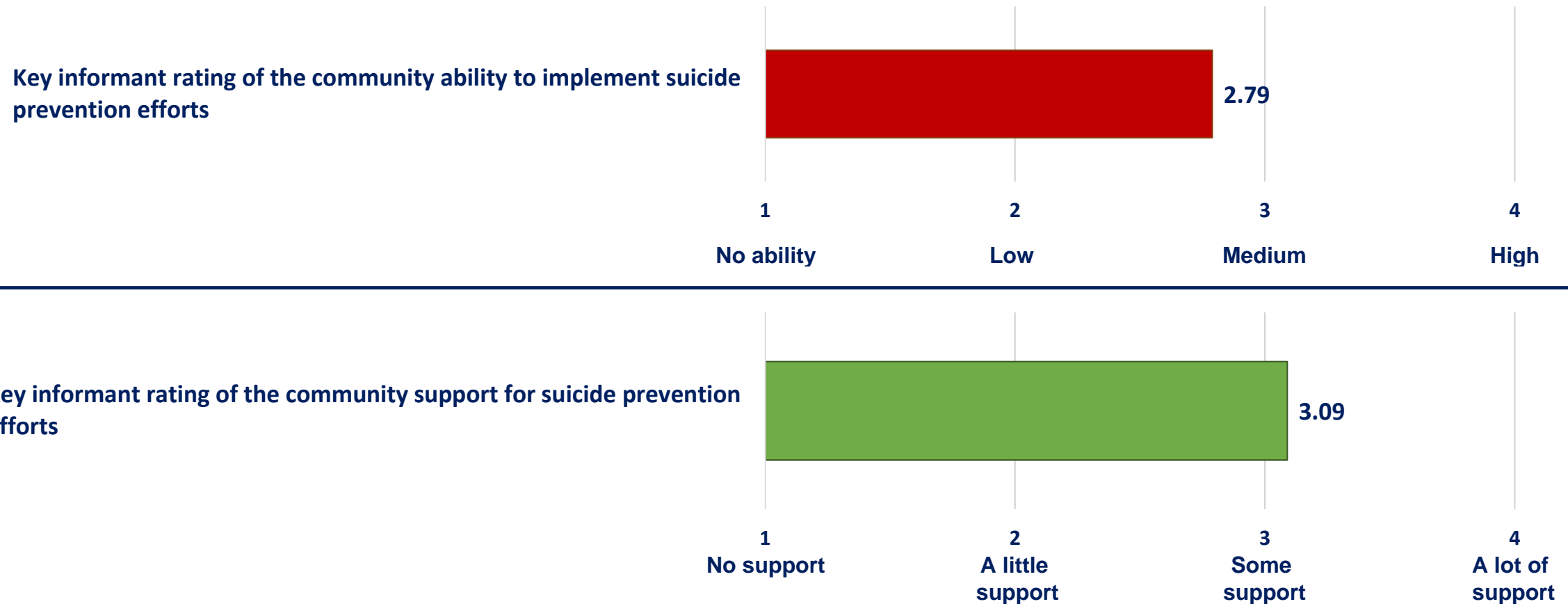
# How important is it to prevent problem gambling in your community? [Q16]: NCRMHB CRS, 2018





# Community Ability and Support for Suicide Prevention [Q17-Q19]: NCRMHB CRS, 2018

93.8% of respondents agree that “suicide prevention efforts (such as educational programs, training, policies, and identification and referral of individuals at risk of suicide) are needed in the community.”



# Community Attitudes Toward Mental Health Promotion [Q20]: NCRMHB CRS, 2018

*Key Informant agreement that “most” community residents ....*

